



A-B TECH ENROLLMENT MAP

NEW STUDENTS START HERE

FORMER STUDENTS START HERE

VISITING STUDENTS START HERE

RETURNING STUDENTS START HERE

Submit Application
& Complete Residency Determination
abtech.edu/apply

Access Online Accounts
Student Email, Self-Service, WebAdvisor, Moodle
abtech.edu/online-services
for help: helpdesk@abtech.edu | 828.398.7550

Apply for Financial Aid
fafsa.gov (school code: 004033)

Submit Application
& Complete Residency Determination to reactivate student account
abtech.edu/apply

Placement/Send Official Transcripts
abtech.edu/placement

New Student Orientation
abtech.edu/nso

Considering a Program Change?
abtech.edu/programselection

not pursuing A-B Tech degree

Submit Application
& Complete Residency Determination
abtech.edu/apply

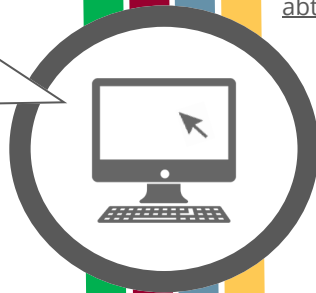
New Student Orientation
abtech.edu/nso

Show Unofficial Transcripts
to advisor in Bailey Building
for classes with prerequisites

Apply for Financial Aid & Scholarships
fafsa.gov (school code: 004033)

Consult With Program Advisor
to create your course Plan
abtech.edu/myadvisor

Register & Pay for Classes Online at:
abtech.edu/registration
abtech.edu/payment



Check Student Email Regularly
for important updates
abtech.edu/studentemail

Get Student ID Card
in Bailey Building

Get Parking Sticker
in Bailey Building

Buy Books
abtech.edu/bookstore

Begin Classes!

Additional Help

Computers

Computers are available in the Enrollment Lab
In the Bailey Building on the Asheville Campus.

Special Enrollment Programs

Selective Allied Health & Limited Program
application steps:
abtech.edu/selective-limited-programs

Career & College Promise (CCP)/ High School Dual-Enrollment:

abtech.edu/ccp

Continuing Education

For non-credit Continuing Education classes:
abtech.edu/ce/registration

Contact Us

For help navigating your path, don't hesitate to
contact us at 828.398.7900 or
info@abtech.edu.