

RESTORING THE HISTORIC IVY BUILDING
on the campus of A-B Tech Community College

A DOOR FROM THE PAST, OPENS TO A NEW FUTURE





AHTORUM



Dear Friends,

For those of us lucky enough to have attended St. Genevieve's or Gibbons Hall, the memories of the school run deep. So many of those memories center around the Auditorium, now known as the "Ivy Building". We remember daily gym class, assemblies and plays, lectures by world renown speakers, basketball games, graduations and last but certainly not least, the dances and proms, with Mother Potts keeping watch from the balcony!

Many of you are familiar with the hard work former St. Genevieve's and Gibbons Hall students put into saving the Ivy Building from demolition. Now, all of us have the opportunity to play a role in its renovation! As we reminisce over our memories of the building, we can be a part in creating new memories for our community.

With our help, Ivy will once again be filled with laughter and energy! Plans for the main level are multi-purpose as an event site for meetings, music, lectures, plays and Continuing Education classes. The lower level will be the new location for the College's Foundation offices. The hard working people in this office will continue their important mission of raising funds for the college, and scholarship dollars for its students.

We learned during our education at St. Genevieve's and Gibbons Hall that individuals can make a lasting difference in their world. This is our chance. Please take a few minutes to look through the following pages, and learn about the difference you can make in the future of a building that has been so important to each of us.

Please join us in making your gift to support this project. We, and the rest of the Campaign Steering Committee, are excited to be a part of ensuring Ivy's legacy as a shining symbol of how the brick and mortar of a building translates into educating, inspiring and encouraging each student to achieve their potential and make a difference in their world.

Sincerely,

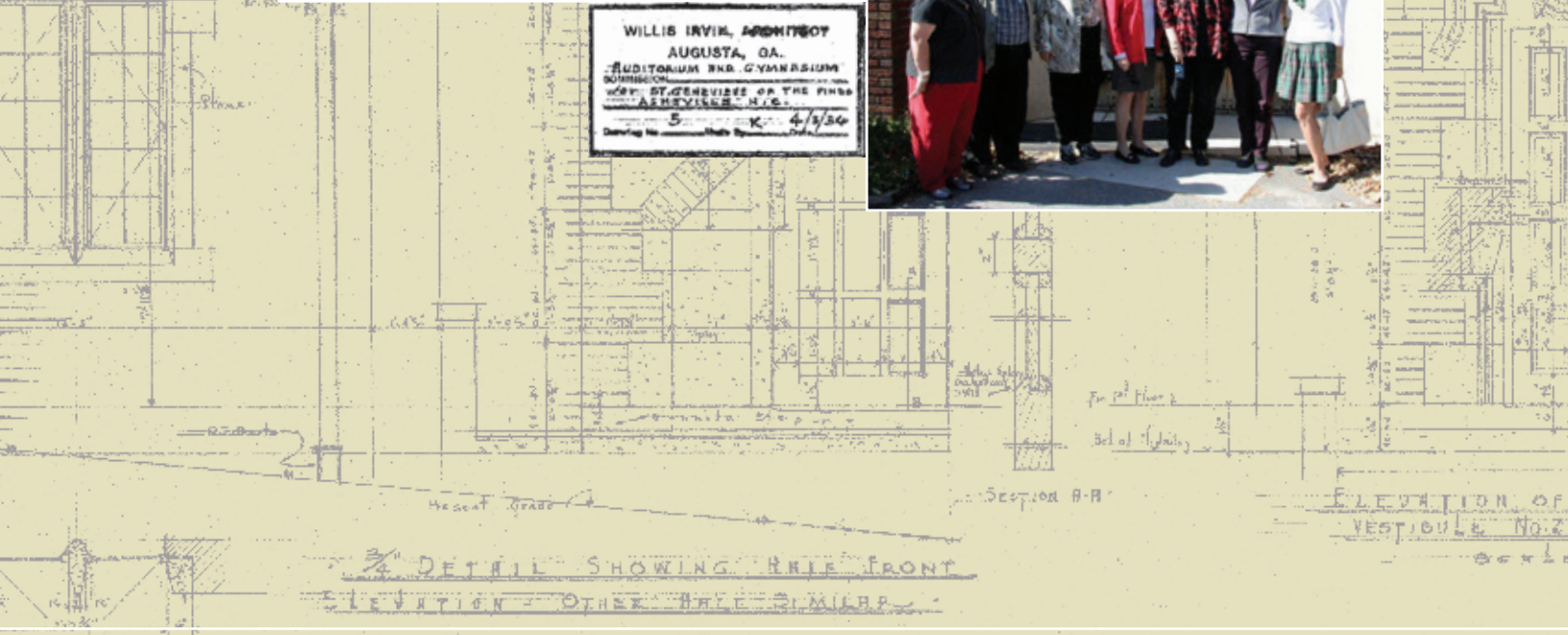
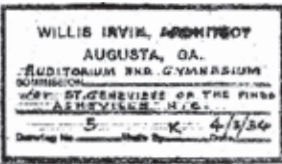
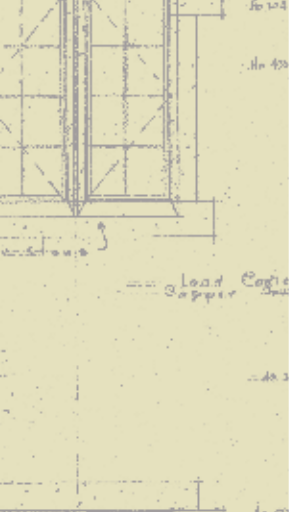
Stuart Camblos, SGP '66
Campaign co-Chair

Kieta Osteen-Cochrane, SGP '60
Campaign co-Chair



The indelible memory I had of the gym was the first rate choreography that involved all the boarding students from all the grades, created by Joy Forlines to an entire side of a *Chicago* album. It was a brilliant production that primarily took place on stage, with some of the dancers infiltrating the audience.

Jan Jones Pulley, class of '74



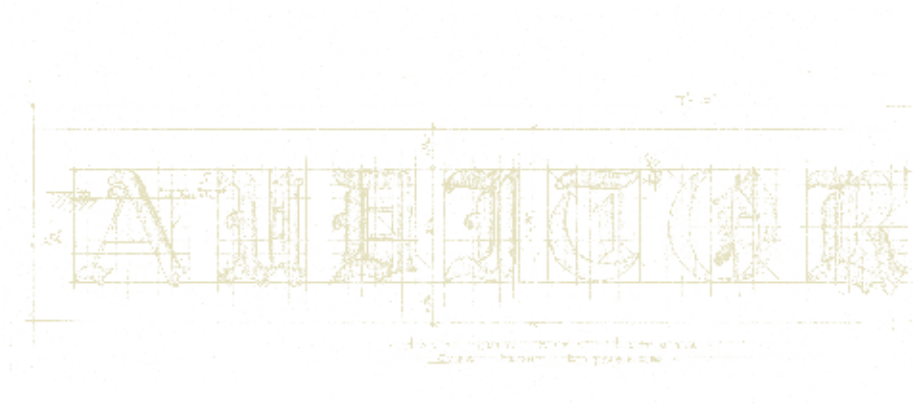
IVY HISTORY

Steeped in architectural and historical significance, the Ivy Building survives as the last remaining building from St. Genevieve-of-the Pines and Gibbons Hall. It was designed by Willis Irvin (1891-1950), a renowned southern residential architect. Many of his works are listed on the National Registry of Historic Places. The Ivy Building served as St. Genevieve-of-the-Pines' auditorium since its construction in 1936. The focal point of the beautiful brick and stone building is the massive oak doors. Their hammered forged iron hinges show the initials W, S, and H, S. These initials are in honor of Willye Stuart, Irvin's wife, and Helen Stuart, her sister, and their family's devotion to St. Genevieve's. These two sisters were instrumental in bringing Irvin and his architectural skills to Asheville.

After World War II, the school converted the building into a multi-use auditorium/gymnasium. Students raised money for the renovation by winning a cash prize for scrap iron collected during the war. Investing their winnings, the Sisters held onto the money several years before using it to add basketball goals and marking the floor for basketball, shuffleboard, and volleyball courts.

Over the years, the auditorium (as it was known while part of St. Genevieve's) witnessed basketball games, science fairs, year-end plays, dances and student graduations until the school closed in 1987. The building was also home to an inspirational lineup of speakers. Helen Keller shared her story of courage and determination. Basque separatists made the students aware of the struggles for freedom in Franco's Spain. Missionaries continuing the work of Father Damien came from Molokai, Hawaii to teach the students of Father Damien's work with the lepers. Also, the students had a chance to meet Dr. Tom Dooley, the humanitarian doctor whose work in Southeast Asia became a model for President Kennedy's Peace Corps.

Having recently fallen into disrepair, the Ivy Building will soon be revitalized, so it can continue with its legacy of touching lives for future generations.



A BRIEF HISTORY OF ST. GENEVIEVE'S AND GIBBONS HALL

In the early 1900s, nuns from the French order of Religious of Christian Education received a request to come to the United States and establish an orphanage in Wheeling, West Virginia. Once the orphanage was securely in place, the French Sisters chose Asheville as a location for a school for young women. Founded in 1908, St. Genevieve-of-the-Pines flourished in various incarnations for over 75 years. What began in a house on Starnes Avenue with 22 students grew to 18 acres on Victoria Road at what is now Asheville-Buncombe Technical Community College. In its heyday, the school enrolled 500 students and its campus expanded to include classrooms, physical education fields, dorms for boarding students, a cafeteria, and residences for the nuns.

In addition to the high school and grammar school for girls, the Sisters established the College of St Genevieve's in 1910, with direct ties to the Catholic University in Washington, DC. This four-year college served women from throughout the United States, as well as Canada, France, Britain, Guatemala, Mexico, Santo Domingo, and Cuba. It saw as its mission to "raise the expectations of female students in the South." The effects of the Depression and declining enrollment forced the Sisters to transform the college into a two-year junior college in 1930. It offered Associate of Arts degrees to women for 25 years, until it too evolved. The St. Genevieve's School for Secretaries opened in 1955 and operated until 1980. In 1949, the Religious of Christian Education expanded its campus and focus to include the old Memminger estate on the adjacent Oakland Road, renamed Gibbons Hall, and a school for boys in grades one through eight.

Declining enrollment and rising costs forced St. Genevieve's and Gibbons Hall to merge with another struggling school – Asheville Country Day School. Thus in 1987, the Asheville Country Day School site on Hendersonville Road became a new school known as Carolina Day School. The Victoria Road site of St. Genevieve's and Gibbons Hall was then sold to A-B Tech. Now all that remains of the 79 years of this magnificent school is the auditorium (known as the Ivy Building) and the memories of its former students and their families.

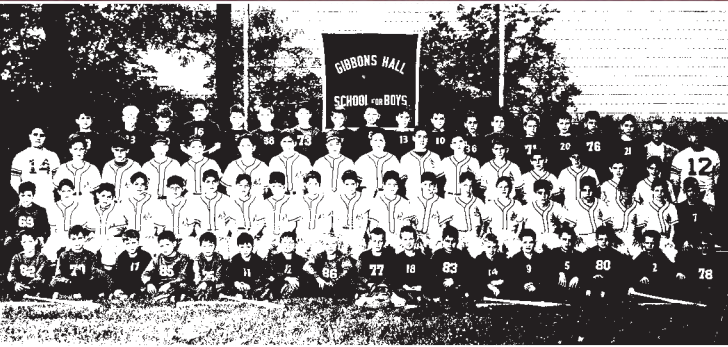


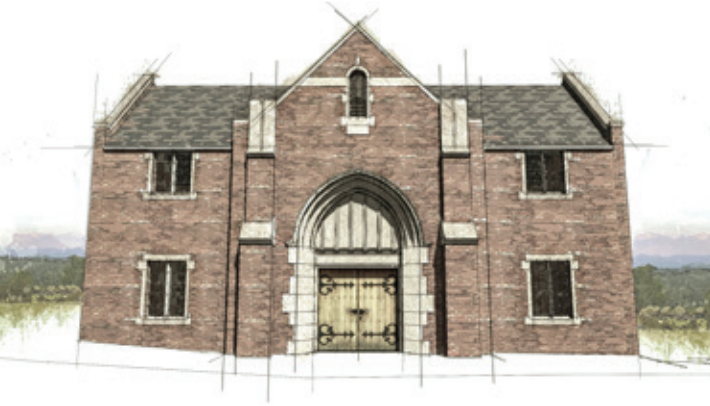
St. Genevieve in thee we glory-
Yes all thy children love thee well.
We hail thy name in song and story,
To all the world thy praise we tell.
To all the world thy praise we tell-

In chorus clear, our voices ringing
Awake the echos far and near
Our hearts find joy and gladness here!
Our love, we show with happy singing-

Hurrah-St Genevieve!
Thy star forever leads!
With joyful song we hail thee and say
St. Genevieve for aye!

*St. Genevieve-of-the-Pines School Song, 1908-1971
Tune: "La Marseillaise"*





I remember speeches, honors, play(s), and poetry... The sounds of all of it echoed through our auditorium, joining those of all that had filled it before. They echo in our lives still... I hope its current inhabitants or visitors can absorb, like we did, some of its power, its challenge and its joy.

Elizabeth Meares, class of '71

FUTURE

The history of a community contributes to its personality. Preserving the history of a place through its significant historic resources gives a community its unique character – providing a link to the roots of the community and its people. Historic preservation involves much more than simply saving and restoring old buildings and sites of historic importance. Recognizing and honoring both “old and new” is one of the things that makes Asheville so special. Historic preservation and rehabilitation renews a community’s sense of place, which is a symbol of every community.

For many, this sense of place has been lost in the migration from city centers to suburban areas and the uniformity they offer. Author Anne Rivers Siddons once wrote: “... there should be, in every life, a place...where you could come and visit your past, and the past of your people, and know that whatever happened outside, here timelessness lived.” Whether or not one is a St. Genevieve’s or Gibbons Hall student, everyone needs a place to see, touch, and learn of a city’s history. Preservation keeps a country’s history alive for the collective memory of all its citizens and visitors.

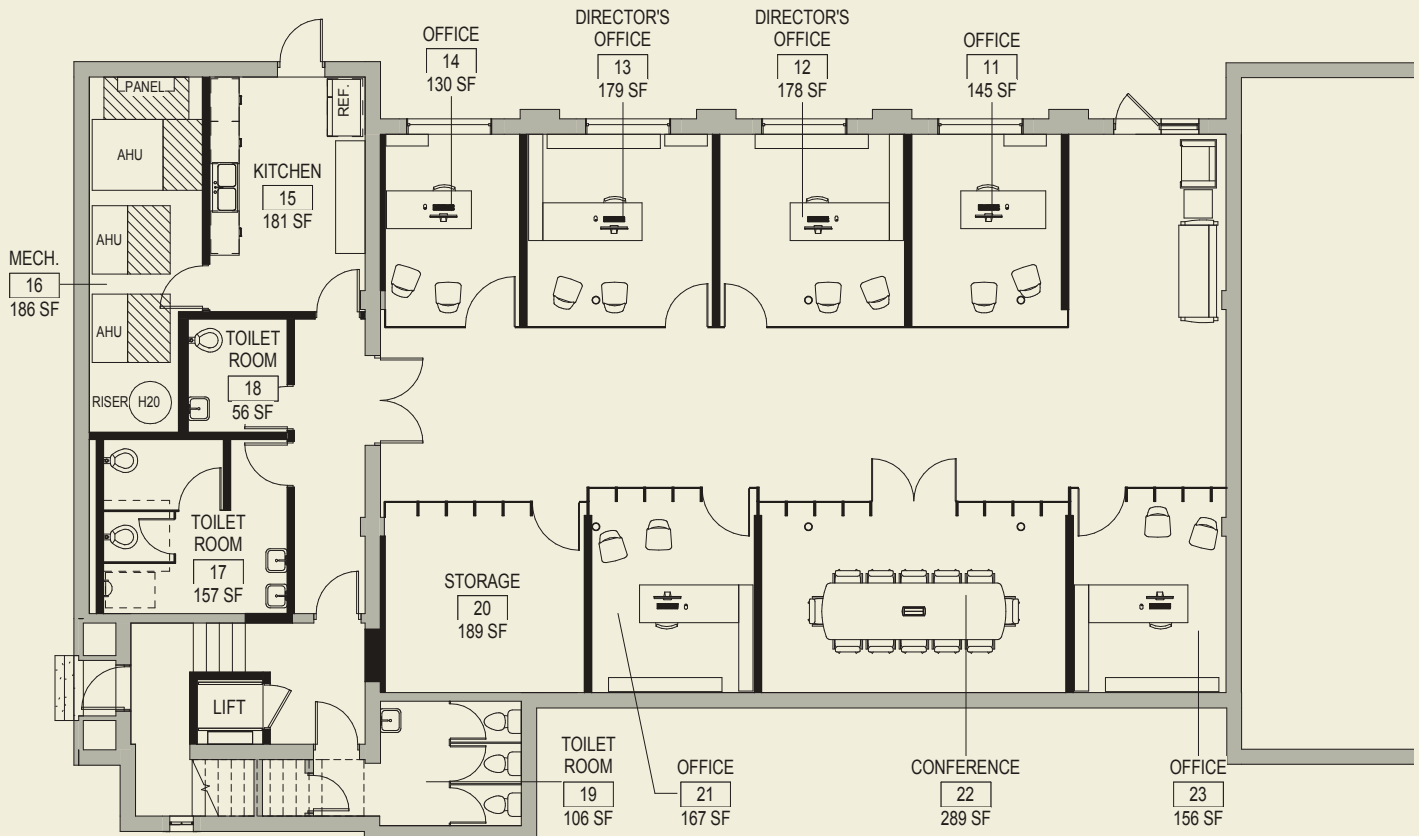
A restored and renovated Ivy Building will allow the building to be alive once again and relive its past as an intimate space for lectures, choral productions, pop-up art classes, as well as film, theater, and other Continuing Education Community Enrichment classes. It can even host dances once again as Continuing Education dance classes practice their moves with evening “dress up” soirées. Ivy will bring to the A-B Tech campus, and the community as a whole, much needed multi-use space to energize, rejuvenate and stimulate both body and spirit.

The repurposed basement of Ivy will create a welcoming environment for the staff of the College’s Foundation Offices, as they work with community members and corporate supporters to ensure their mission of providing financial support for the College and scholarship support for its students.



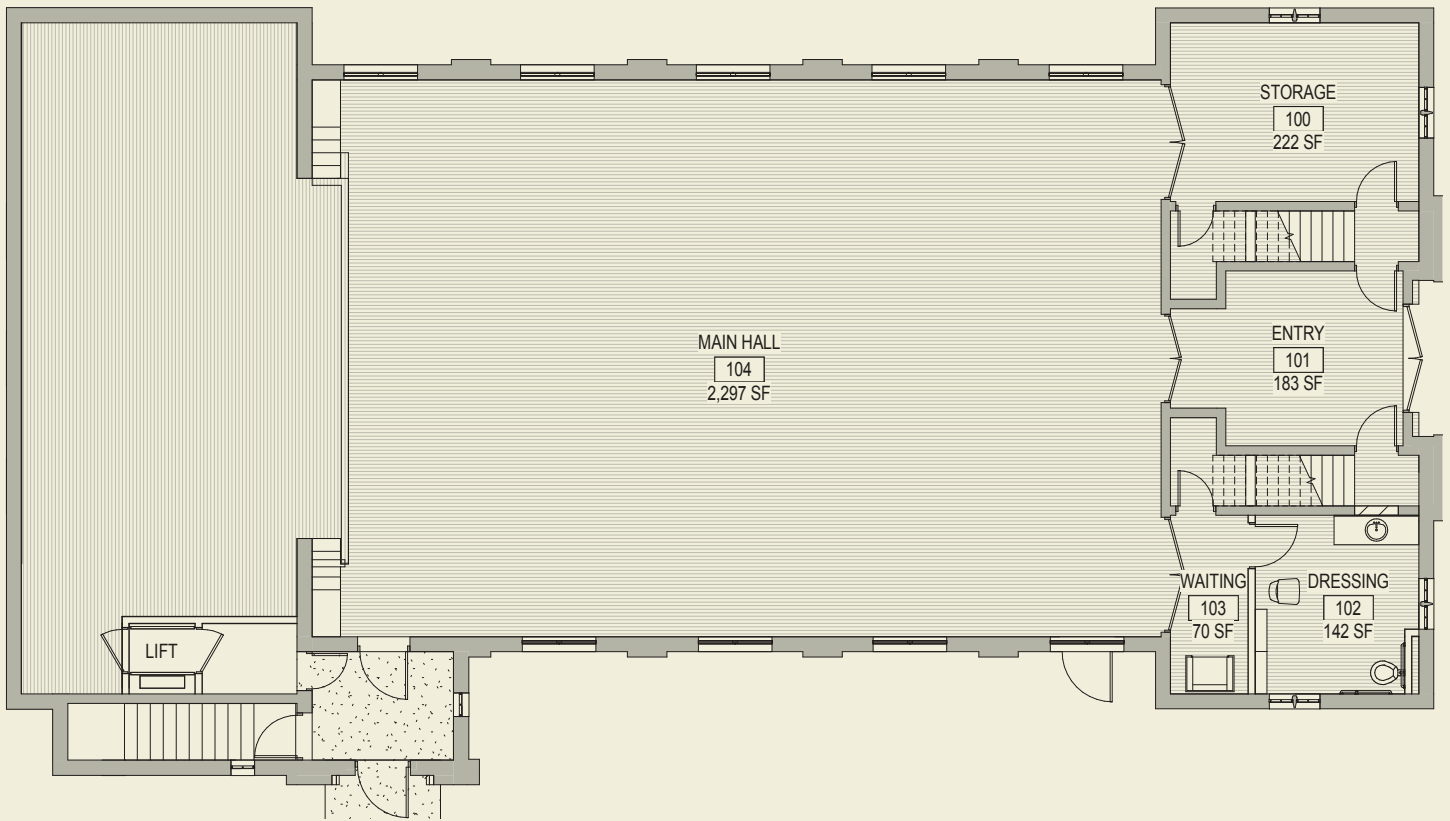
ARCHITECTURAL RENDERINGS

Clark Nexsen



BASEMENT LEVEL FLOOR PLAN - OPTION 1

The basement level of the Ivy Building, formerly home to the school's locker rooms and dining hall, will be transformed into offices for A-B Tech's Office of College Advancement. This department oversees the College's fundraising, grant-writing, and volunteer and alumni relations services. The newly remodeled space will allow for a welcoming environment for visitors, along with much needed storage space for the staff, as well as meeting space for the department and the College. This space will also include a kitchen area and rest rooms accessible from both levels of the building.



FIRST FLOOR PLAN

The main level of the Ivy building will be brought back to its former purpose of a multi-use space. The flooring, ceiling, lighting, windows, and stage will be restored keeping the original vision of St. Genevieve's / Gibbons Hall, and current building codes in mind. The space will be used for lectures, choral productions, pop-up art classes, as well as film, theater, and other Continuing Education Community Enrichment classes. It will also be available to the College for larger meetings and other events.



Dear Friends,

Saving and restoring the Ivy Building has long been a priority for A-B Tech as part of our ongoing mission to honor the past while planning for the future on our Asheville campus. The Ivy Building has historic value for the community as the last remaining structure from St. Genevieve-of-the-Pines and Gibbons Hall schools, and it also has a prolonged history with A-B Tech as the former home of our Decorative Painting and Restoration Program.

The history of educating our community on this hill dates back to 1887 when the Home Industrial School for elementary-age girls was opened, followed by St. Genevieve's in 1910. Built in 1936 and used predominantly as a gymnasium and auditorium, the Ivy Building figures prominently in the memories of generations of students who attended St. Genevieve's and Gibbons Hall.

A-B Tech's commitment to preserving the history of its Asheville campus also includes Fernihurst Mansion, Sunnicrest Lodge, and the Smith-McDowell House. Our Decorative Painting and Restoration Program also made valuable contributions to the historic homes on our campus, as well as the Biltmore Estate and Asheville City Hall.

Once restored, the Ivy Building will be used for public meeting space, continuing education classes, and offices for the Foundation. The College has dedicated \$1.3 million to the project from the recent state Connect NC bond referendum, but the total cost of the restoration is estimated at \$1.8 million, leaving a gap of \$500,000.

Included in this booklet are naming and memorial opportunities to honor your families, classmates, former nuns and teachers, or anyone else for whom the Ivy Building holds special memories. We thank you for your willingness to assist A-B Tech with the preservation of our community's heritage.

Sincerely,

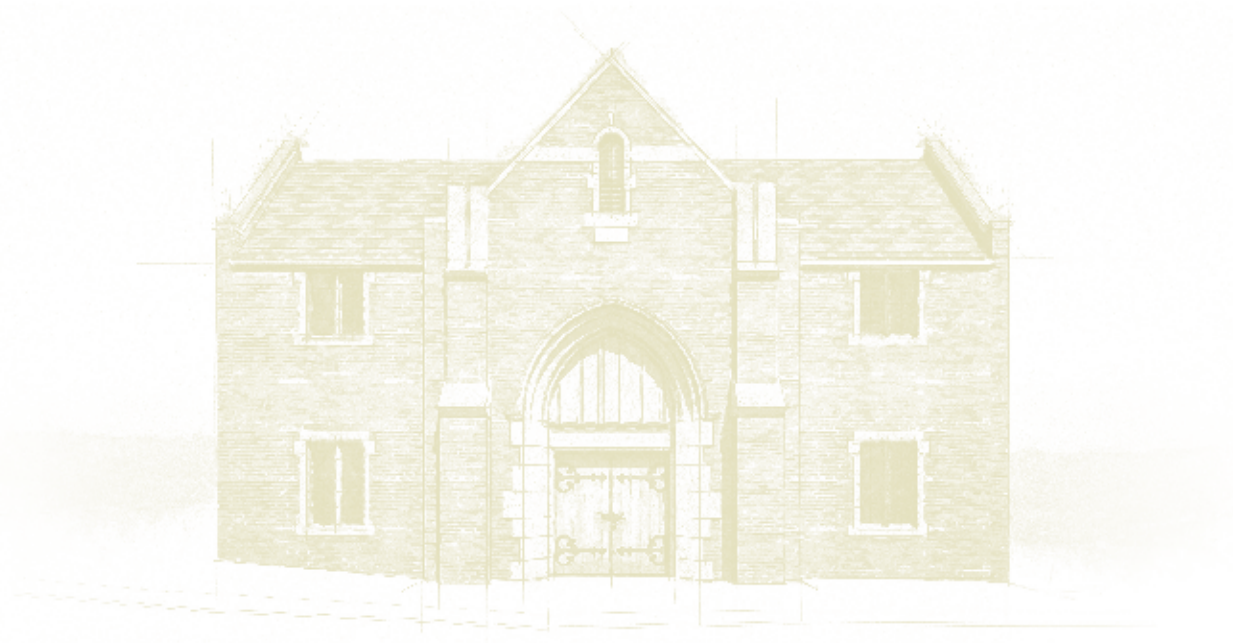
A handwritten signature in black ink that reads 'Dennis King'.

Dennis King
President, A-B Tech Community College

STATEMENT OF PROBABLE COST

50% Schematic Design

Total of the work	\$1,240,089
Design Contingency	\$86,806
Total Construction costs, Today's Dollars	\$1,326,896
General Conditions, Bonds, Insurance	\$99,517
Grand Total Construction costs, Today's Dollars	\$1,426,413
Escalation - Assumed Construction Period of 6/2018 to 3/2019	\$114,113
<hr/>	
Grand Total Construction costs	\$1,540,526
Owner Construction Contingency	\$123,242
Soft Costs	\$162,500
Furniture, fixture, equipment	\$ —
Technology/Equipment	\$20,000
<hr/>	
Grand Total Costs	\$305,742
GRAND TOTAL PROJECT COSTS	\$1,846,268



WAYS TO GIVE

The A-B Tech Foundation welcomes and appreciates gifts of all sizes in support of the Ivy Renovation Project. Your generosity is an investment in the future of our college and our community. We are pleased to offer a variety of ways in which you can support this campaign. We recommend that donors consult with their financial advisors before finalizing a contribution regarding the tax deductibility of gifts.

Gifts of Cash: Many donors choose to make gifts of cash (check, Visa, MasterCard, American Express). Such gifts to the Ivy Renovation Project (through A-B Tech’s Foundation) are tax deductible to the extent allowed by law.

Pledges: Pledge payments to the campaign may be spread over three years to allow and encourage donors to make larger commitments and complete them over a multi-year timeframe. Of course, contributions made on a different timetable are welcome. We will be glad to work with you to meet your needs.

Gifts of Securities: Donors who choose to give appreciated securities can receive a charitable tax deduction for the full market value of the securities and avoid capital gains tax if the donor has owned the asset for at least one year. To avoid the capital gains tax you must provide the securities themselves, not the proceeds of their sale. These gifts may be deducted at fair market value on the date of transfer to the A-B Tech’s Foundation. Please consult your tax advisor about how the tax rules apply to your contribution.

NAMING OPPORTUNITIES

NAMING OPPORTUNITY (Based upon availability)	AMOUNT	TOTAL AMOUNT
Main Room (Includes floor, lighting, ceiling, walls)	\$100,000	\$100,000
Bell	\$50,000	\$50,000
Stage and Lift	\$50,000	\$50,000
Foyer	\$25,000	\$25,000 (partial)
Mezzanine	\$20,000	\$20,000
Windows (9)	\$20,000	\$180,000
Front Door	\$10,000	\$10,000 (taken)
Conference Room	\$10,000	\$10,000
Offices (6)	\$10,000	\$60,000
Kitchen	\$5,000	\$5,000
Total		\$510,000



**WE WISH TO THANK THE
FOLLOWING FOR THEIR
ASSISTANCE IN THE CREATION
OF THIS BOOKLET**

North Carolina Collection,
Pack Memorial Public Library,
Asheville, North Carolina

Members of the Ivy Project Campaign
Steering Committee

Former students, faculty and staff of
St. Genevieve's and Gibbons Hall

Campaign Steering Committee

Mary Frances McGowan Allen SGP '54

Stuart Camblos SGP '66

Jo Salley Chandler SGP/GH '78

David Morgan GH '59

Kieta Osteen-Cochrane SGP '60

Mary Ann Rice
(A-B Tech Board of Trustees)

Jan Schochet SGP '71

Ann Skoglund
(A-B Tech Foundation Board)

Class Agents

1940 Eugene (Bob) Carr

1951 Wilhelmina Vander Kaaden
Rhodarmer

1954 Mary Frances McGowan Allen

1959 David Morgan

1960 Kieta Osteen-Cochrane
Melinda Farr Brown

1962 Martha Eshleman

1964 Millicent Bitter Elmore

1965 Nene Shuford Gunn

1966 Stuart Camblos

1967 Debbie Anthony Dodge

1969 Brenda Lunsford Lilly

1970 Ellen Keetch Craig

1971 Jan Schochet

1978 Jo Chandler

1987 Vijay Kapoor



Asheville-Buncombe Technical Community College, 340 Victoria Road Asheville, NC 28801
828-398-7900 abtech.edu

Asheville-Buncombe Technical Community College is accredited by the Southern Association of Colleges and Schools Commission on Colleges to award associate degrees, diplomas and certificates. Contact the Commission on Colleges at 1866 Southern Lane, Decatur, Georgia 30033-4097 or call 404-679-4500 for questions about the accreditation of Asheville-Buncombe Technical Community College.

Equal Opportunity Educational Institution