



# 2024 - 2025

## Social and Human Services: Addiction & Recovery Transfer Track

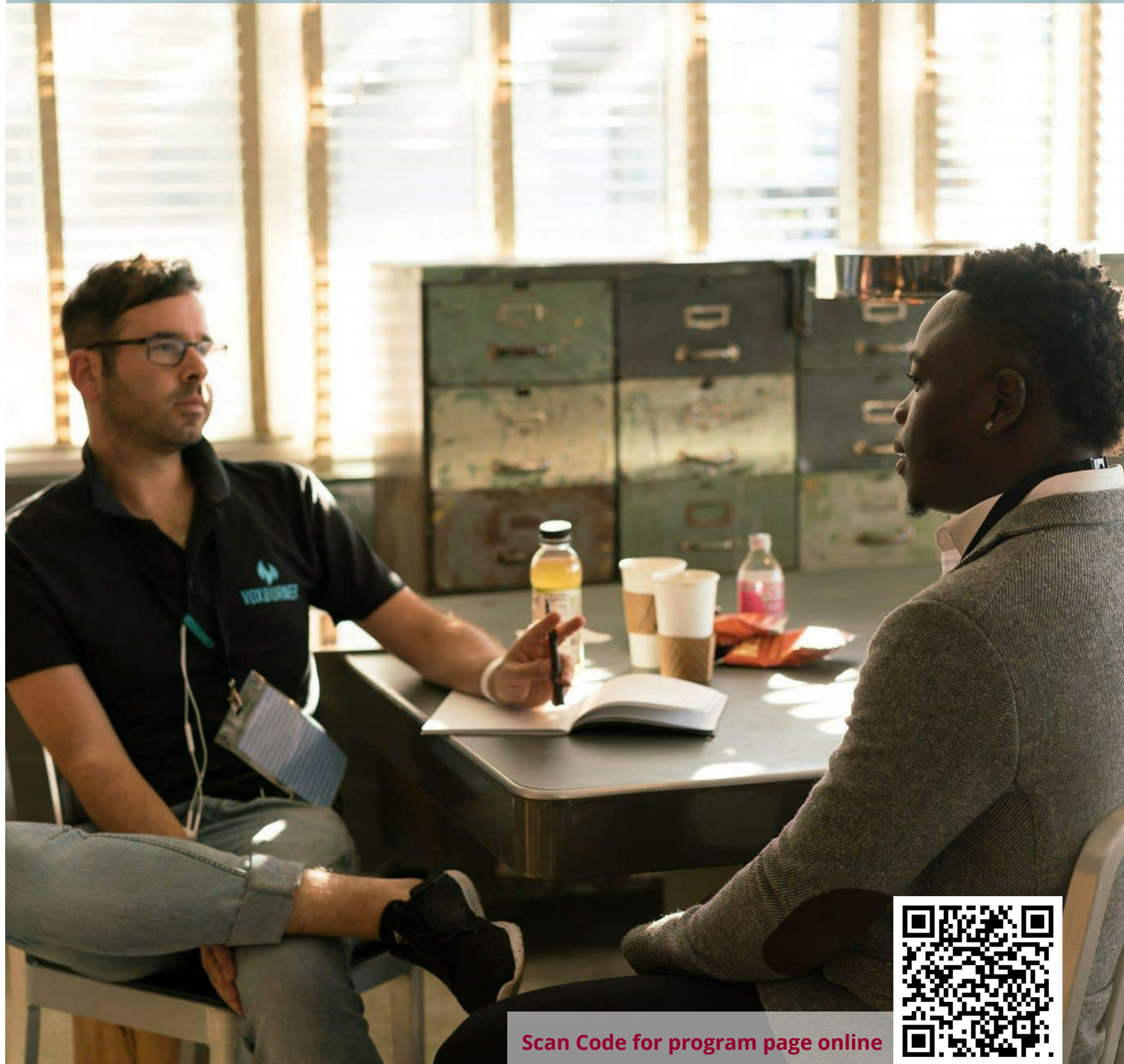
### Associate in Applied Science Degrees

MULTIPLE LOCATIONS

VARIED SEMESTER LENGTHS

NUMEROUS PROGRAMS

FINANCIAL AID



Scan Code for program page online

ASHEVILLE, NORTH CAROLINA • (828) 398-7900 • ABTECH.EDU

## Social and Human Services: Addiction & Recovery Transfer Track

The Social and Human Services curriculum prepares students for entry-level positions in institutions and agencies which provide social, community, and behavioral health services. Along with core courses, students take courses which prepare them for specialization in specific human service areas.

Coursework includes the development of professional knowledge, skills, and values in human services. Opportunities for experiential learning allow students to apply knowledge and skills learned in the classroom.

Graduates should qualify for positions in government, private, and nonprofit social and human services agencies. Graduates may choose to transfer and continue their education at a variety of colleges and universities.

### Specific Requirements

1. General college admission requirements.
2. Students pursuing the degree should be aware that employers in the human services field (substance abuse and otherwise) can require prospective volunteers, interns, and employees to pass medical examinations, criminal background, drug & alcohol screen, immunization, and citizenship verification checks before they will be allowed to work at an organization.

### Career Opportunities in Human Services Technology

A.A.S. Degree                      National Salary Range: \$38,250-\$58,770  
    Local Salary Range: \$36,900 - \$47,960

Case Worker, Family Support Worker, Youth Worker, Social Service Liaison, Residential Counselor, Behavioral Management Aide/Technician, Case Management Aide, Eligibility Counselor, Public Assistance Worker, Substance Abuse Worker, Life Skills Instructor, Social Service Aide/Technician, Group Activities Aide/Technician, Therapeutic Assistant, Gerontology Aide/Technician, Home Health Aide, Group Home Worker, Mental Health Aide/Technician, Intake Interviewer, Community Outreach Worker, Psychological Aide/Technician

Salaries may vary based on size of business and other factors.

### Total Cost Estimate

<b>Tuition per Semester (NC Resident)</b>	\$1,216.00 (16+ credit hours) \$76.00/credit hour (1-15 hours)
<b>Computer Use and Technology Fee</b>	\$48/semester
<b>Activity Fee</b>	Fall and Spring semesters only, Main campus and Online, \$35.00
<b>CAPS Fee (Campus Access, Parking and Security)</b>	\$20/semester
<b>Matriculation Fee</b>	\$10/semester
<b>Student Insurance</b>	\$2/Semester

**Additional Fees including books may incur, please check A-B Tech website for more detail:** <https://abtech.edu/program/human-services-technology-aas-associate-applied-science-cost-estimate>

**Have you applied for Financial aid? Please visit A-B Tech website for instructions:**  
<https://abtech.edu/future-students/financial-aid/applying-aid>

*Courses requiring a grade of "C" or better: ACA, BIO, ENG, HSE, HUM, MAT, POL, PSY, SAB, and SOC*

	Course Prefix	Course Name	Credit Hours
First Semester (Fall)	ACA 122	College Transfer Success	1
	ENG 111	Writing & Inquiry	3
	HSE 110	Intro to Human Services	3
	MAT 143	Quantitative Literacy	3
	PSY 150	General Psychology	3
	SAB 110	Intro to Addiction & Recovery	3
Second Semester (Spring)	BIO 161	Intro to Human Biology	3
	ENG 112	Writing/Research in the Disc	3
	HSE 123	Interview Tech Human Service	3
	HSE 210	Diversity Ethics and Trends	3
	SAB 120	Intake and Assessment	3
	SOC 210	Introduction to Sociology	3
Third Semester (Fall)	HSE 212	Group Dynamics	3
	HSE 220	Case Management	3
	HSE 223	Counseling Theories & Skills	3
	PSY 241	Developmental Psych	3
	SAB 135	Addictive Process	3
Fourth Semester (Spring)	HSE 225	Crisis and Intervention Prin	3
	HUM 115	Critical Thinking	3
	POL 120	American Government	3
	SAB 210	Addiction and Recovery Counsel	3
	SAB 240	Addiction and Recovery Counsel	3
<b>Program Totals:</b>			<b>64</b>

### For More Information:

Contact Porscha Orndorf by email at [porscharorndorf@abtech.edu](mailto:porscharorndorf@abtech.edu) or by phone at 828-398-7389

### Certificate Available:

**Social and Human Services Diploma  
 Addiction and Recovery Certificate  
 Mental Health Studies Certificate**

For more information, please visit:  
<https://abtech.edu/programs/academic/human-services>