



Echocardiography Certificate Program

Program Overview

- Certificate in Echocardiography (Cardiac Sonography)
- Designed for currently working medical sonographers
- Focus on adult cardiac imaging skills
- Prepares you for entry-level echo positions



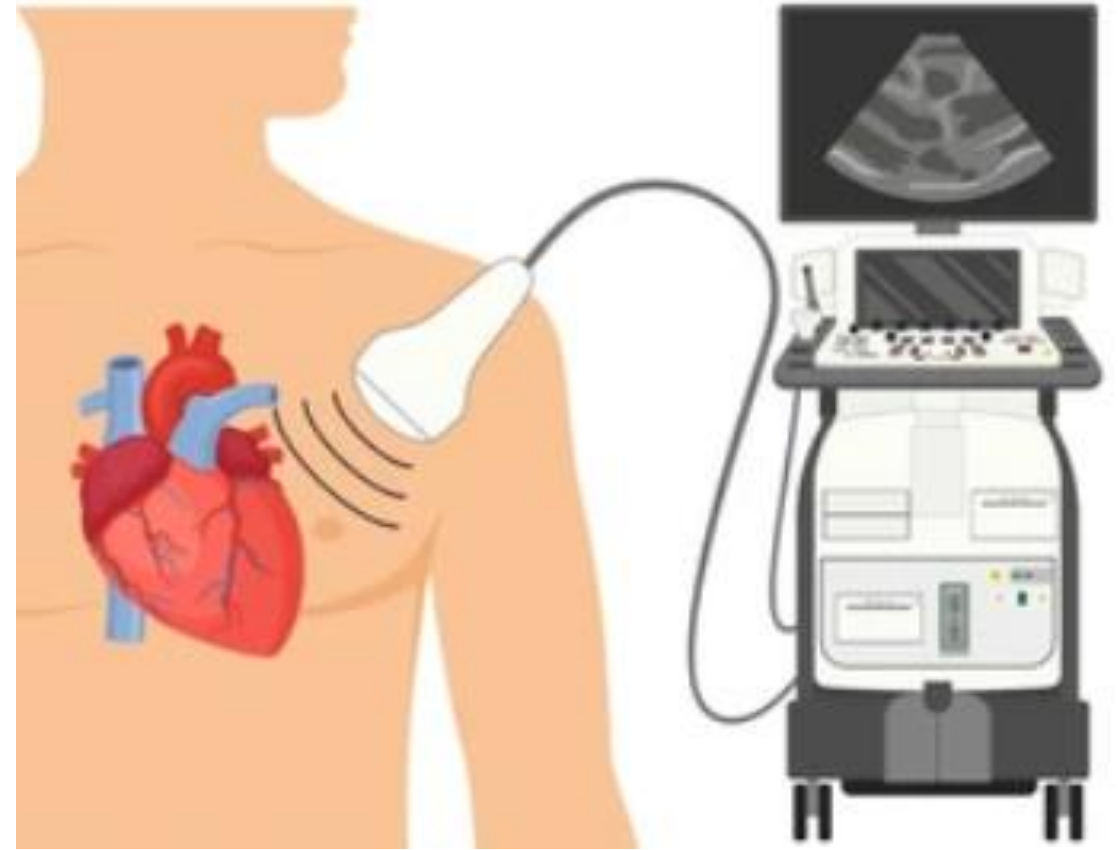
Why Choose Echo?

- Expands career opportunities and job flexibility
- High demand for cardiac sonographers nationwide
 - Demand is expected to keep increasing over the 10 years nationally
- Increases earning potential
- Opportunity to work in hospitals and cardiology clinics



What is Echo?

- Cardiac sonography (echocardiography) focuses on advanced evaluation of cardiac structure and function using ultrasound-based imaging and hemodynamics using Doppler modalities (spectral, color, and continuous-wave)



Program Structure

- Short-term certificate program lasting 2 semesters
- Combination of:
 - Didactic coursework
 - Open lab time will be available, but not mandatory
 - Virtual open office hours must be attended to complete some testing
 - Clinical time must be completed at the student's place of employment
 - Courses are 100% online

Curriculum Highlights

- Semester 1
 - CVS 163 Echo I – focus on basic cardiac anatomy, physiology, and pathology
- Semester 2
 - CVS 164 Echo II – focus on in-depth cardiac anatomy, physiology, and pathology
 - CVS 277 Cardiovascular Topics – focus on case studies and registry exam prep

Mandatory Requirement for Admissions

- Must apply to AB-Tech unless attended within the past year
- Completed the program information session –(this PowerPoint)
- Proof of active ARDMS or CCI registration (OB, abdomen or vascular)
- Official transcript showing completion of a sonography program with physics coursework
- Participation in an interview with an echocardiography instructor
- Employer letter (on official letterhead) confirming:
 - Employee is in good standing
 - Permission to perform echocardiograms at work during training



Next Step

Email Echocardiography Instructor – Kelli Harrell

kellinharrell@abtech.edu